

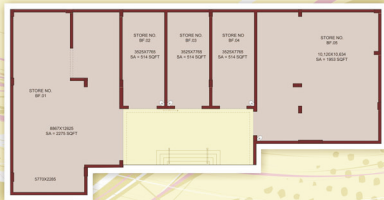


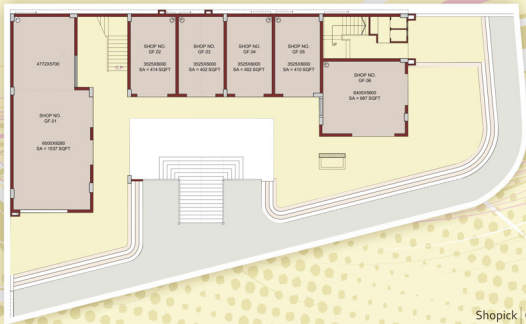
GC SHOPICK

GC Shopick is a complex that makes neighbourhood shopping an experience to look forward to. Situated on the premises of a premium homes complex GC Centrum in Indrapuram, this marketplace is at the centre of a high spending locality. With the trendy and modern Indrapuram as its main customer base, besides the immediate neighbourhood of GC Centrum, this complex is sure to be a destination of choice for a large number of shoppers. And its strategic location of a corner plot, gives ample window showcasing for the shops in GC Shopick. Also, a mix of categories ranging from the daily needs to the high-end products in this complex will ensure a steady footfall. Ample parking space will be another factor for the crowds to come to this place frequently.

- Situated on a corner plot with 18 mtrs. and 24 mtrs. wide road on both sides
- Enough parking space
- Seperate display area for all the shops
- 3 KW power back-up in each shop/store
- Provision of split AC piping in all the shop/store
- Provision of water inlet & Outlet connection in all the shop/store
- Provision of Broad band/Telephone connection in all the shops
- Ready for possession
- Catchment area of 2000 families

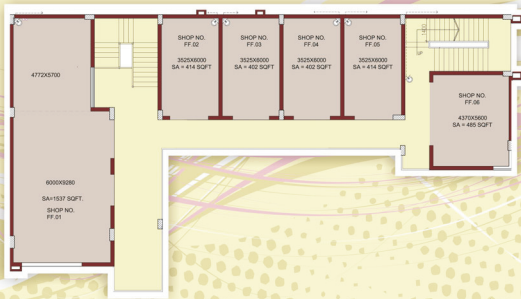






Shopick | Ground Floor Plan





Shopick | First Floor Plan





Map not to scale



Corporate Office: 4, Dayanand Vihar, Delhi-110092
 Site Office: Plot No.-7, Mail Road, Ahinsa Khand-II, Near CISF Camp, Indirapuram, Ghaziabad (U.P.)
 Phone: 987332284/5/6 • Website: www.gcgroup.co.in • Email: info@gcgroup.co.in

